

# 2020 - 2021

## Disability Expo Overview

an initiative of





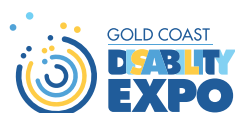
# National Disability Expo Overview



# Disability Expos 2020 -2021



**HUNTER DISABILITY EXPO**  
23rd & 24th OCT 2020



**GOLD COAST DISABILITY EXPO**  
4th & 5th JUN 2021



**GEE LONG DISABILITY EXPO**  
To Be Confirmed



**SYDNEY DISABILITY EXPO**  
6th & 7th AUG 2021



**NEPEAN DISABILITY EXPO**  
17th & 18th SEP 2021



**BRISBANE DISABILITY EXPO**  
15th & 16th OCT 2021



**MELBOURNE DISABILITY EXPO**  
18th & 19th NOV 2021





Exhibitors  
**800**

**90+**  
Sponsors

valuable  
information  
provided to  
Expo attendees  
by the NDIA

High levels of community  
involvement involved in  
volunteering, working at or  
performing at the event

Over 11000  
**Attendees**

**17000+**  
registrations  
to attend

attendee  
approval rate  
of **>90%**

**community**  
focused  
committees

## attendee feedback



**"Absolutely fantastic and informative, I found it very inspirational to go to the stands I needed to see & talk to the people I needed to talk to face to face.** Everyone I saw has gone beyond my expectations... & I am so appreciative of them for going that extra mile."

South West Disability Expo attendee



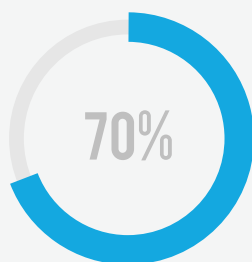
Do you feel the information provided to you at the Expo will assist you with your ongoing care needs?



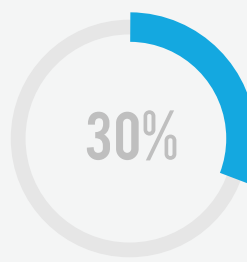
Overall how would you rate your experience at the Expo today?



## Who attended?



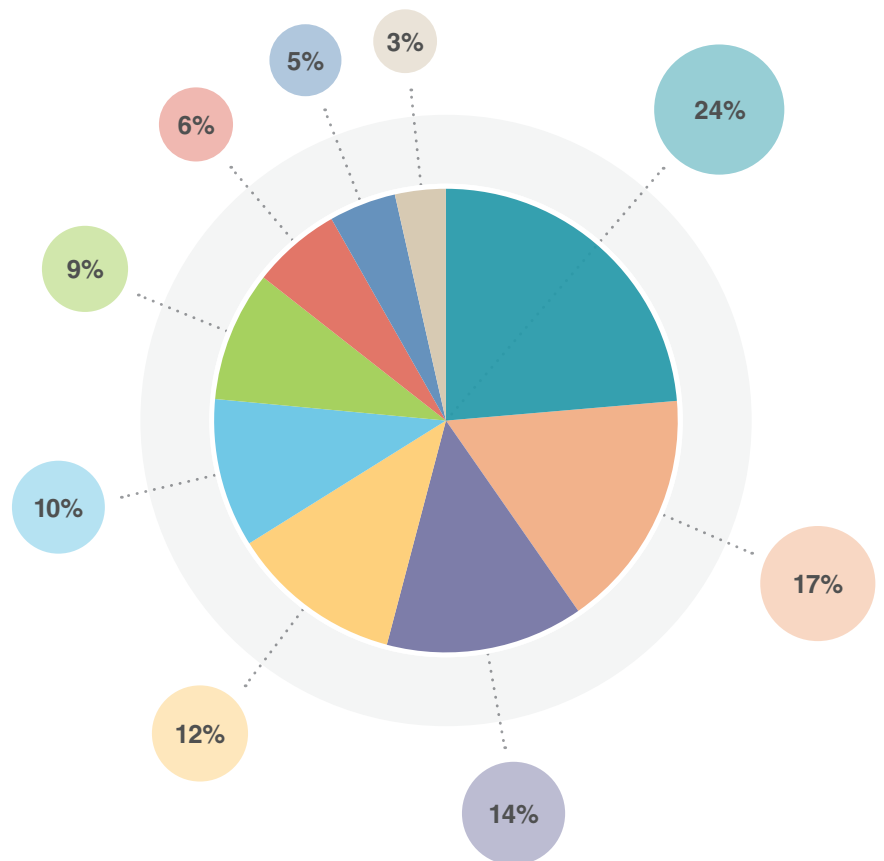
**people with a disability,  
family and carers,**



**professionals**  
e.g. OT's, Physiotherapist and  
other professionals

## Category type of disability

- **physical** disability
- **intellectual** disability
- **autism** spectrum disorder
- **not** applicable
- **other**
- **mental** health conditions
- **vision** impairment
- **deaf** or hard of hearing
- **acquired** brain injury



## Reason for attending

- **connect** with service providers
- **products** and aids
- **innovative** technologies
- **learn** about NDIS
- **sporting** / recreational activities
- **Information** for careers
- **Employment** opportunities
- **government** or advocacy agencies
- **children's** services



## What people enjoyed at the expo

**The variety of service  
& product providers**



**The all ability  
stage performances**



**The all age  
entertainment**



**NDIS  
presentation**



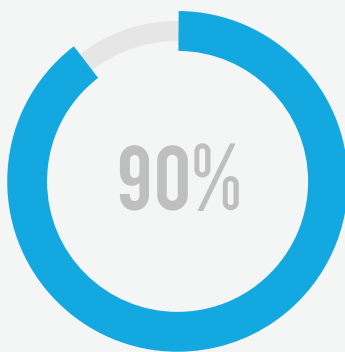
**Atmosphere  
of the Expo**



**The staff**



**YES**



**Have you passed your  
details onto 1 or more  
exhibitors at the Expo?**







The range  
of exhibitors



The variety of people with  
a disability in attendance



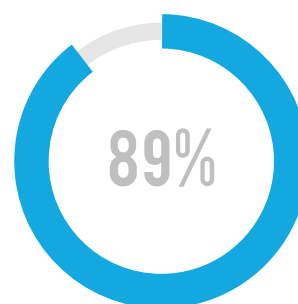
The entertainment  
provided for attendees



Event  
management



The number  
of Leads



**exhibitors likely to  
exhibit at expos in  
the future**

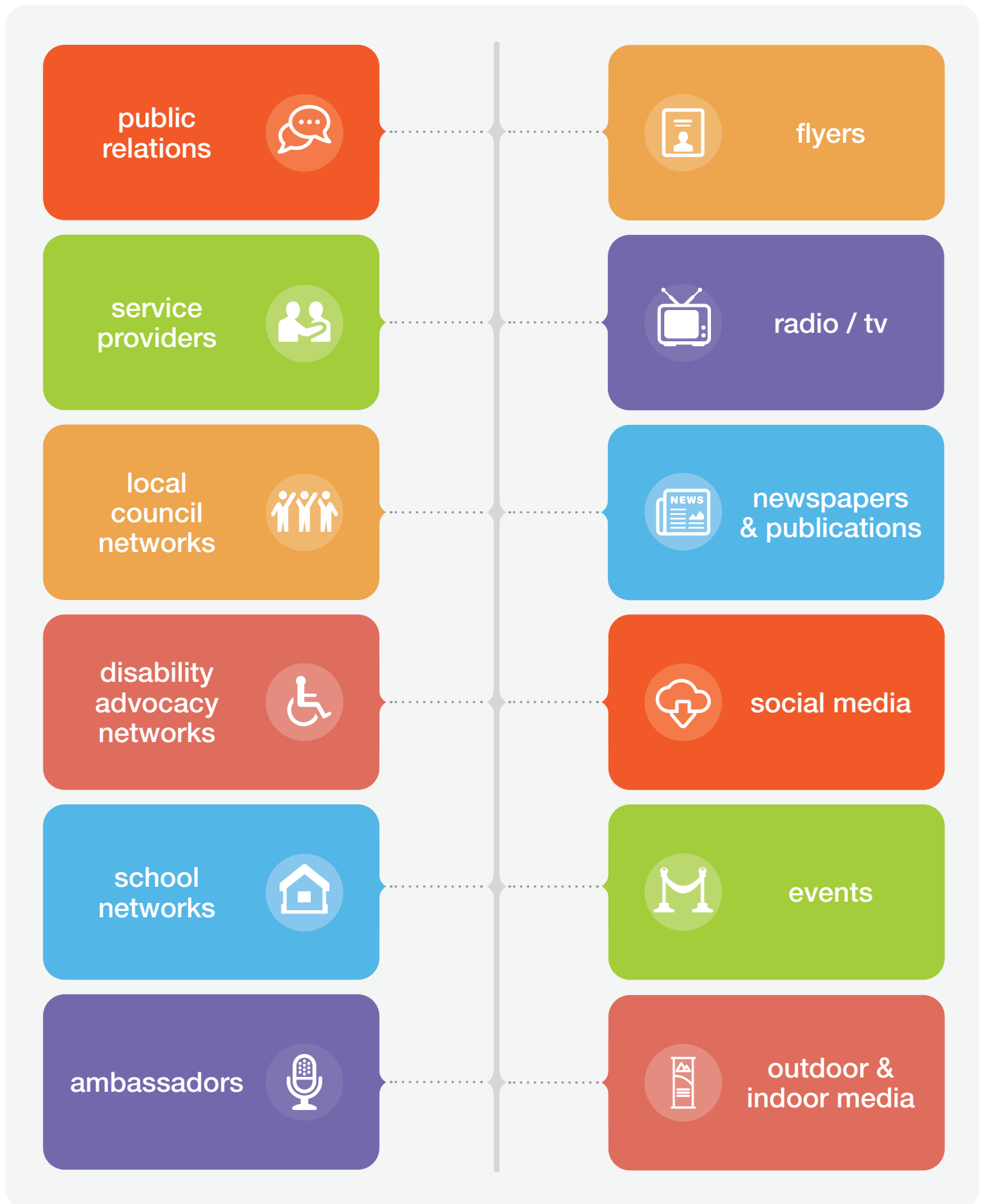
“”

**“ARC Care and Ability attended the Sydney Disability Expo. We were thrilled with the number of visitors we received over the two days... We were very pleased with the running of the event and we’re glad to continue working with Social Impact Institute...”**

**Leesa Potter** - National Care & Ability Manager ARC Care and Ability



# How we promote our expos



# Join Us



“““

**By sponsoring one of our community based expos**  
you will place your name  
before the public as an organisation  
that cares about people and be  
actively involved in making a  
difference in their lives

**David Jack** CEO, Social Impact Institute

let us  
help you  
increase  
your **impact**



## to exhibit or sponsor get in touch



Gold Coast Disability

**02 9025 9392**

gcde@socialimpact.institute



Sydney Disability

**02 9025 9391**

sde@socialimpact.institute



Brisbane Disability

**02 9025 9395**

bde@socialimpact.institute



Melbourne Disability

**02 9025 9394**

mde@socialimpact.institute



Hunter Disability

**02 9025 9393**

hde@socialimpact.institute



Geelong Disability

**02 9025 9396**

gde@socialimpact.institute



Nepean Disability

**02 9025 9388**

nde@socialimpact.institute